



Product Features

- Super Slim liner LED with high output
- Quick connection system between fixtures
- Many lengths available
- Various mounting methods including magnetic
- To be used with constant voltage DC 24V driver
- Dimmable with available accessories

Specification

- Voltage : DC 24V
- Operating temperature : 0~45° C
- Lamp life : 40,000hr/70%
- Available color : 4000K
- Color rendering : Ra > 80
- Energy efficiency : 75 lm/W
- Degree of protection IP20

DIVA 2 HO

High Output



Diva2 HO 3W Length (145 mm)



Diva2 HO 6W Length (285 mm)



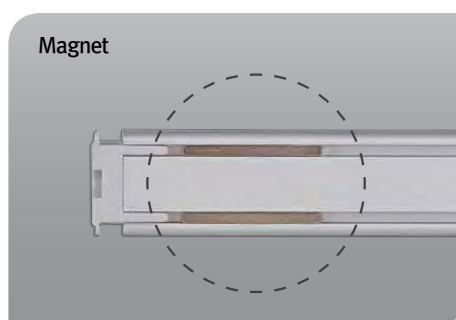
Diva2 HO 12W Length (565 mm)



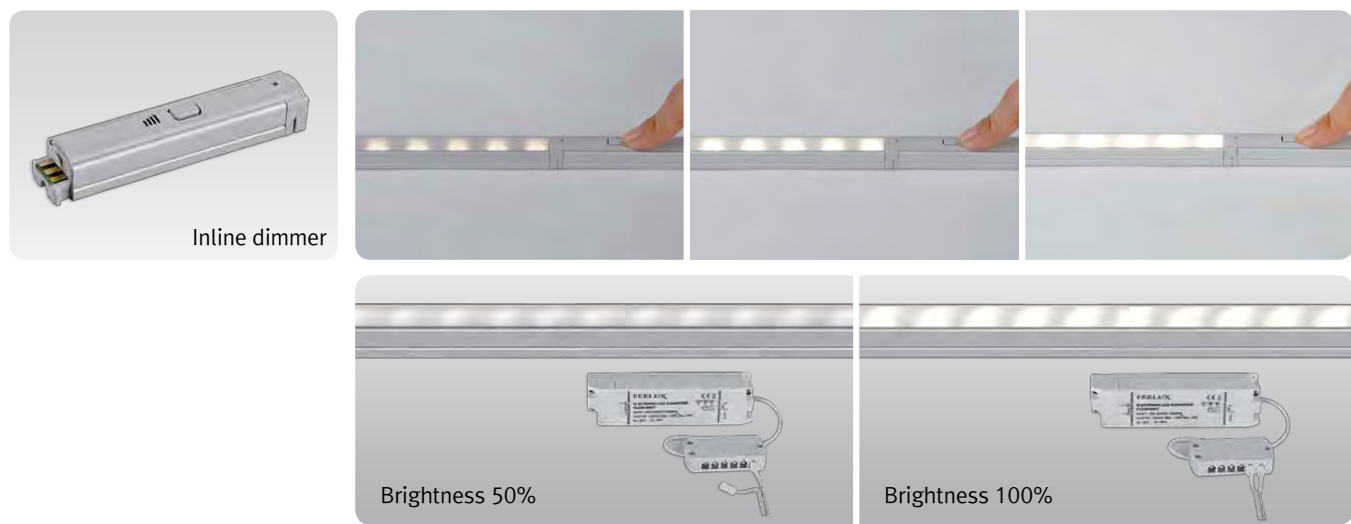
Diva2 HO 18W Length (845 mm)



Diva2 HO 24W Length (1123mm)

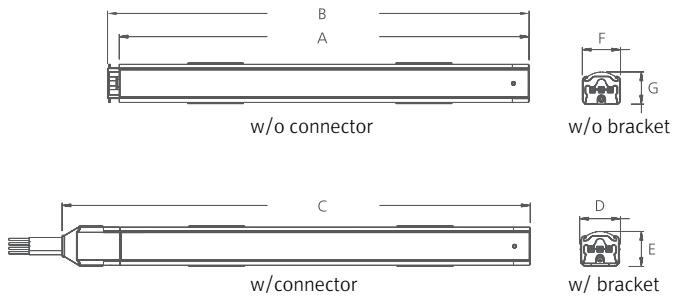


Various options



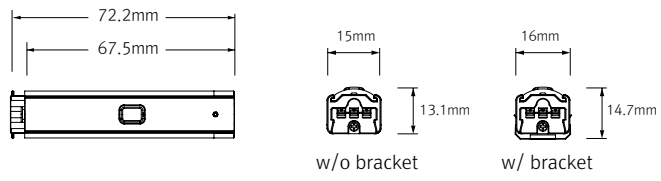
Dimension

* Fixture

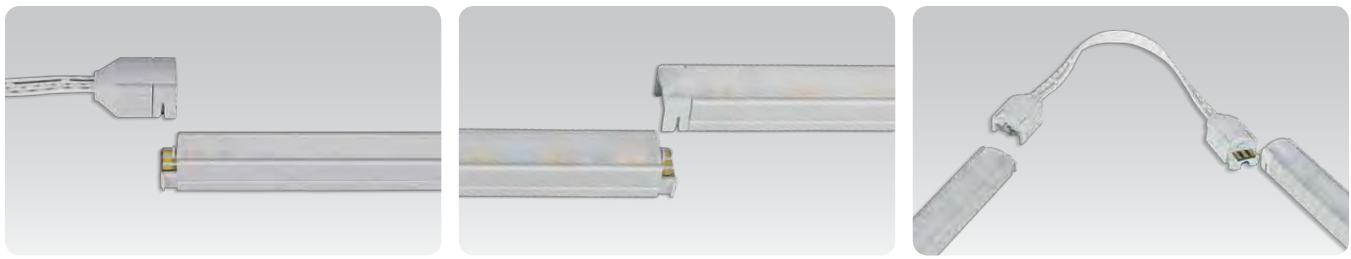


Model Name	Power Input (V)	Lamp Power (W)	A (mm)	B (mm)	C (mm)	D (mm)	E (mm)	F (mm)	G (mm)
DIVA230NHO	DC 24	2.9	140	145	162	16	14	15	12.5
DIVA300NHO	DC 24	5.8	280	285	302	16	14	15	12.5
DIVA600NHO	DC 24	11.6	560	565	582	16	14	15	12.5
DIVA900NHO	DC 24	17.4	840	845	862	16	14	15	12.5
DIVA1100NHO	DC 24	23.2	1118	1123	1140	16	14	15	12.5

* Inline dimmer



Easy connection

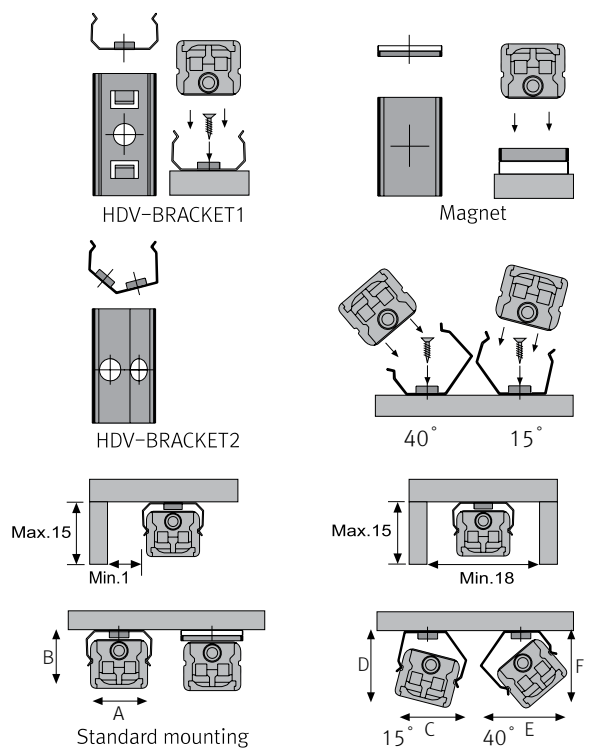


M12 - Anschlußkabel

Artikel-Nummer	Bezeichnung	Länge
D AK-HO-200-M12	Anschl. Kabel mit M12 Pigtail	200 mm



Installation



Max. connection

- DIVA2 HO : 75Watt in one row (single power feed)
- LED Driver

LED Driver Model Name	Max. units for LED Driver		
	24V/15W	24V/30W	24V/75W
DIVA 230N HO	5	10	25
DIVA 300N HO	2	5	12
DIVA 600N HO	1	2	6
DIVA 900N HO	-	1	4
DIVA 1100N HO	-	1	3

	A(mm)	B(mm)	C(mm)	D(mm)	E(mm)	F(mm)
DIVA 2 HO	16,8	14,2	17,5	16,5	19,1	17,5

Accessories

Ⓐ Connecting cables (Between DIVA2 HO & DIVA2 HO)

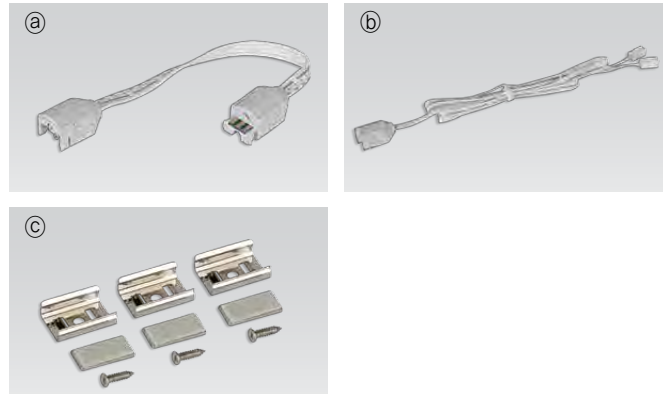
DVKHO-150	DVKHO-300	DVKHO-600	DVKHO-1200	DVKHO-1800
150mm(6inch)	300mm(1feet)	600mm(2feet)	1200mm(4feet)	1800mm(6feet)

Ⓑ Power feed : D AK-HO-025

Power feed 2500mm (Between DIVA2 HO & 6-way distributor)

Ⓒ Mounting bracket : DV2HO-CLIP

Included in fixture



M12 - Anschlußkabel

Artikel-Nummer	Bezeichnung	Länge
D AK-HO-200-M12	Anschl. Kabel mit M12 Pigtail	200 mm



Anschluß-Belegung

