

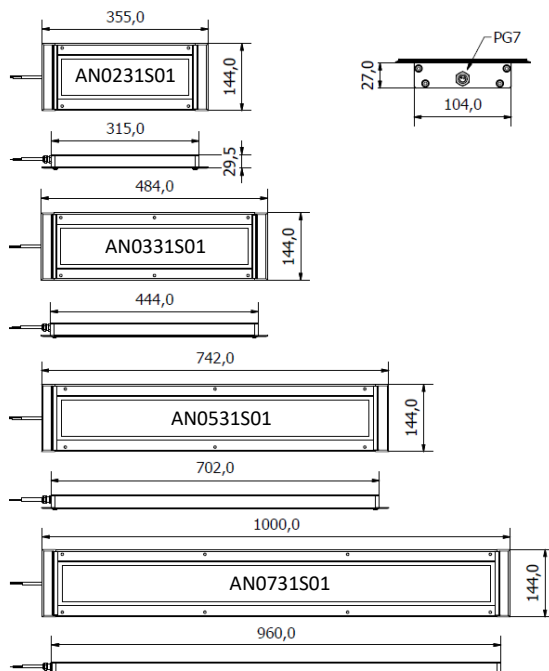


State-of-the art LED technology inside a robust aluminum housing. Machine Tool Debris and liquidproof structure. Resistant at vibrations. Lighting system particularly suitable for industrial applications, automation processes, medium and large size CNC machines. Front tempered diffusing glass 4 mm thickness.

- Structure entirely made of aluminum
- Depth 27 mm
- 4 sizes from 13.98 in/(355mm) to 39.37 in/(1000 mm) in length
- Recessed mount
- Vibration-resistant up to 55Hz
- 4 mm thick, tempered front glass
- IP68 – IP69 Protection Index
- Suitable for wet locations
- Operating temperature from -20° to + 45° C
- 120° diffused light beam angle
- LED lifespan (L 70) > 60 000 h
- Light color 6500 K - CRI 80
- Power Supply 24 VDC via PVC cable
- Class III IEC
- ATEX Zones 2 & 22



## DIMENSIONS (mm)



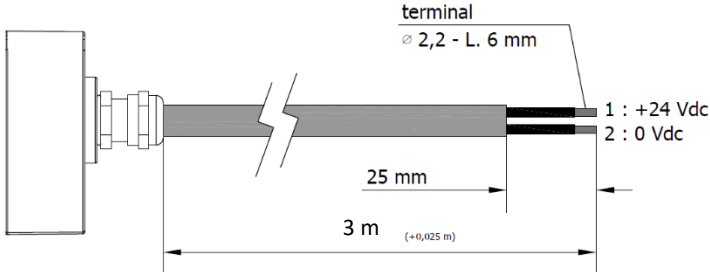
## MECHANICAL FEATURES

Model	AN0231S01	AN0331S01	AN0531S01	AN0721S01
Casing Material	Extruded aluminum			
Side Enclosers	Extruded aluminum			
Surface Treatment	Standard: 10 microns of natural aluminum solution oxidation			
Front Glass	Extra clear transparent tempered 4 mm thick glass			
Weight	~ 1,60 kg	~ 2,30 kg	~ 3,50 kg	~ 4,50 kg
Protection Index	IP68 – IP69			
Impact Resistance	in accordance with EN60079-0:2012			
Operating Temperature	-20 °C to + 45 °C			
Installation	N° 4 M5 screws	N° 6 M5 screws	N° 6 M5 screws	N° 8 M5 screws

## ELECTRICAL FEATURES

Model	AN0231S01	AN0331S01	AN0531S01	AN0721S01
Power usage	26,5 W	40 W	66,5 W	93 W
Power Supply	22 ÷ 36 Vdc			
Device Power Protection	Full protection against reverse polarity			
Electrical Connection	Cable 3 m	Cable 3 m	Cable 3 m	Cable 3 m
Insulation Class	Class III (SELV)			
Efficiency Class	A/A+/A++/A+++ (Integrated LED module) compliant with UE Law No. 874/2012			

## CONNECTION with 3 m Cable, Standard length

PVC 2x 0,75 mm <sup>2</sup> L = 3 m	Wire	Connection
	1 Black	+24 Vdc
	2 Black	0

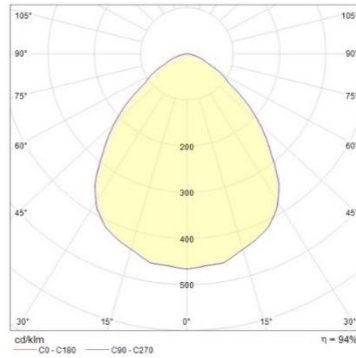
## OPTICAL FEATURES

Model	N° and Type of LEDs	LED Lifespan	Light Color	CRI	Light Beam Angle	Luminous Flux	Efficiency
AN0231S01	70 Mid Power LED	60.000 L70*	6500 K	80	120 °	2400 lm	91 lm/W
AN0331S01	105 Mid Power LED	60.000 L70*	6500 K	80	120 °	3600 lm	90 lm/W
AN0531S01	175 Mid Power LED	60.000 L70*	6500 K	80	120 °	6150 lm	92 lm/W
AN0731S01	245 Mid Power LED	60.000 L70*	6500 K	80	120 °	8300 lm	89 lm/W

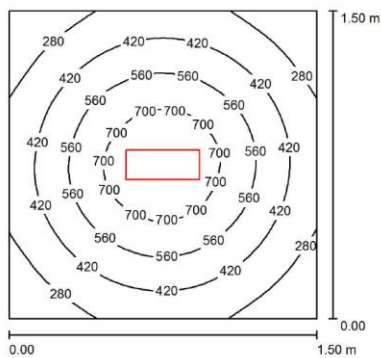
\* Flow beam reduced by less than 30% after 60.000 hours

# PHOTOMETRIC DIAGRAMS

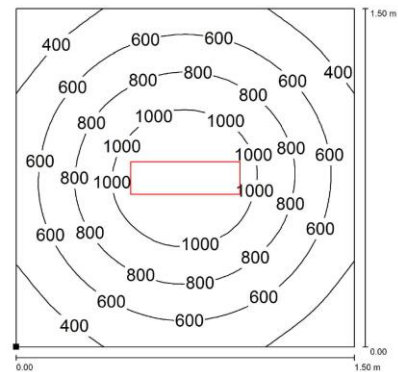
## 120° Flow beam



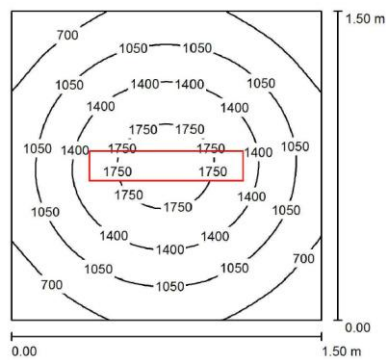
AN0231S01



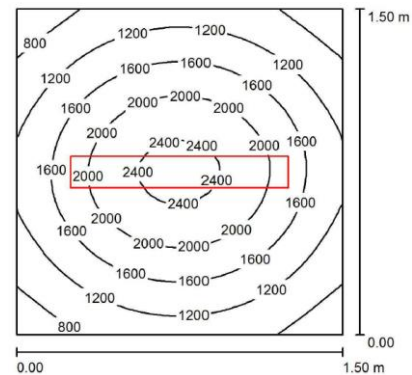
AN0331S01



AN0531S01



AN0731S01



Distance graphic: 1m

## ORDER CODES

Model	Description
AN0231S01	Antario 355mm 26.5w 24vdc 3 m
AN0331S01	Antario 484mm 40w 24vdc 3 m
AN0531S01	Antario 742mm 66.5w 24vdc 3 m
AN0731S01	Antario 1000mm 93w 24vdc 3 m

All the information gathered by this manual can be modified at any time without prior notice and do not imply any obligation by CCEA

ANTARIO ATEX - Sales Summary 04.07.2022

Europe

[www.ccealights.com](http://www.ccealights.com)

**C+R Automations- GmbH**

Nürnberger Straße 45  
90513 Zirndorf

Tel. +49 (0)911 656587-0  
Fax +49 (0)911 656587-99

E-Mail: [info@crautomation.de](mailto:info@crautomation.de)  
[www.crautomation.de](http://www.crautomation.de)

Änderungen vorbehalten 3